

Maxi Clay

Marc Krusin, 2023

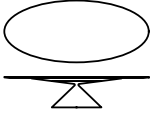
The iconic Clay table reaches unprecedented and generous dimensions until it becomes MAXI. A surprising 3,5 metres oval top offers new perspectives and expands the possibilities of to domestic environments and otherwise, featuring a precise and clear graphic sign in a perfect union between harmony of shapes and solidity of the material.



Maxi Clay

Table with rigid polyurethane base covered with handcrafted finishes "Concrete", "Stone" and "Marble". The "Marble" finish is obtained through the manual application of marble powder mixed with resin. Top in MDF covered with handcrafted finishes, in ceramic or in ash wood.

Ceramic top available only in 240 × 120 cm format



Clay

height

ceramic top 73,5 cm

MDF top 75,5 cm

dimensions

240 × 120 cm

260 × 130 cm

280 × 140 cm

300 × 140 cm

320 × 148 cm

350 × 148 cm

Basamento

Handcraft finishes



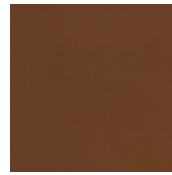
D56 ARDESIA
CONCRETE



D58 GHIACCIO
CONCRETE



D59 CACAO CONCRETE



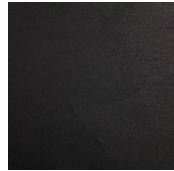
D60 MATTONE RED
CONCRETE



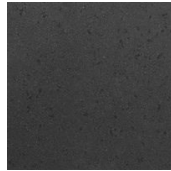
D61 WHITE CONCRETE



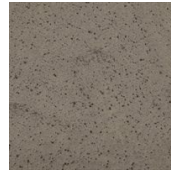
D65 LUNA GREY
CONCRETE



D66 BLACK CONCRETE



D62 COURT GREY



D64 TUFO STONE



D67 LAVA STONE

Top

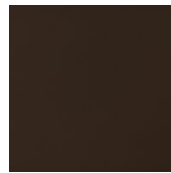
Handcraft finishes



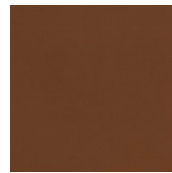
D56 ARDESIA
CONCRETE



D58 GHIACCIO
CONCRETE



D59 CACAO CONCRETE



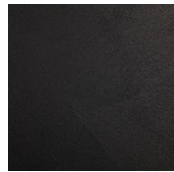
D60 MATTONE RED
CONCRETE



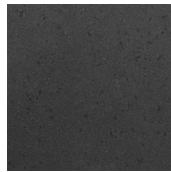
D61 WHITE CONCRETE



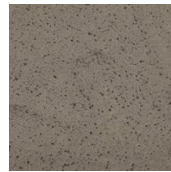
D65 LUNA GREY
CONCRETE



D66 BLACK CONCRETE



D62 COURT GREY



D64 TUFO STONE



D67 LAVA STONE

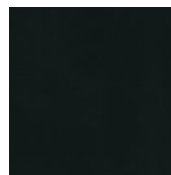
Ceramics



D84 BIANCO CALCE



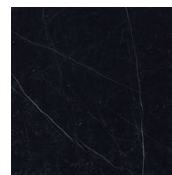
D85 CEMENTO



D79 BUCCHERO BLACK



D90 BIANCO STATUARIO



D92 GLOSSY
MARQUINA BLACK



D93 SAHARA



D94 INDUSTRIAL
WHITE



D95 INDUSTRIAL GREY

Marble



N08 CIPOLLINO VERDE

Wood



C01 NATURAL ASH



C05 CARBONE ASH